

МЕНЕ ТИ ПОЛЮБИВ

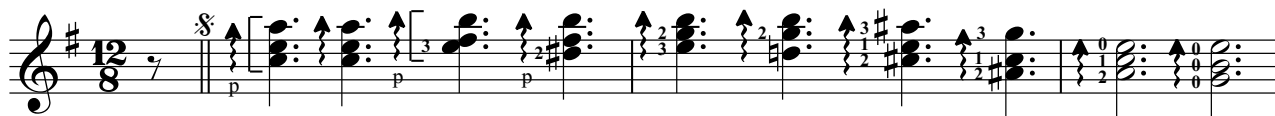
Ты возлюбил меня

Слова і музика Ю. Рижкової

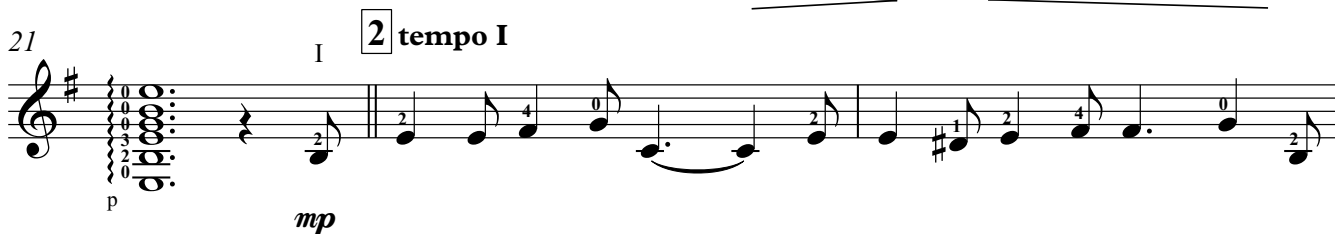
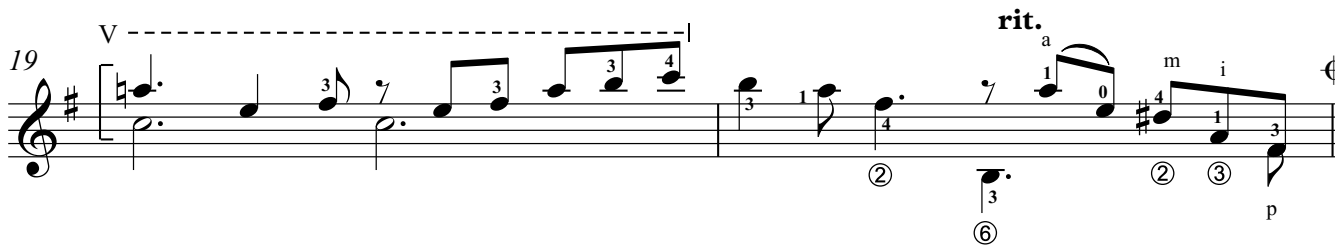
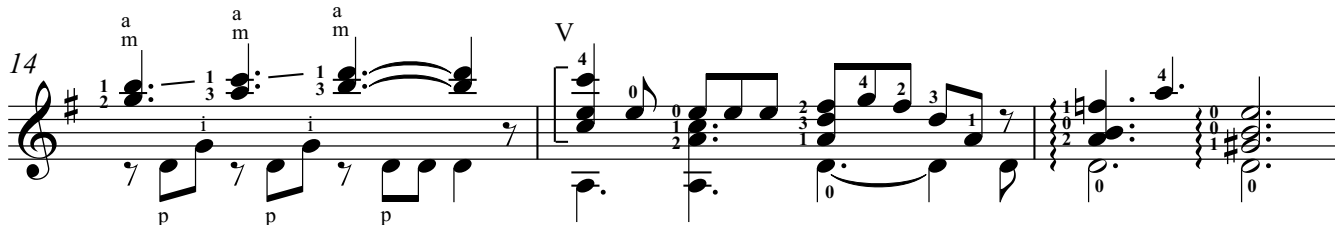
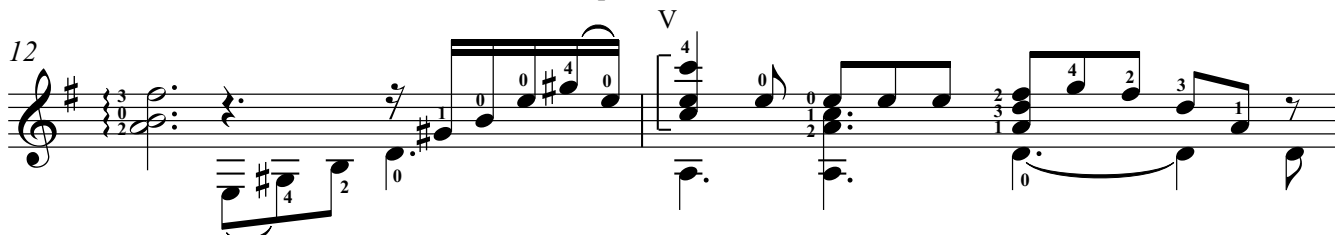
Перекладення М. Богданова і Д. Рижкова

Animato $\text{♩} = 70$

V ----- VII -----

*mf*

Приспів



30

[illegible]A musical score for the song "The Rose Tree". The score is written for voice and piano. The key signature has one sharp (F#), indicating D major or B minor. The time signature is common time (C). The vocal melody consists of several phrases, each starting with a quarter note followed by eighth notes. The piano accompaniment features chords and single notes, often with fingerings indicated by numbers 0-4. A dynamic marking of *p* (piano) is present at the beginning of the piano part. The lyrics are written below the vocal staff.[illegible]

A musical score for the song "The Rose Tree". The score is written on a single staff with a treble clef and a key signature of one sharp (F#). The melody is composed of eighth and quarter notes, with some measures containing triplets. The lyrics "The Rose Tree" are written below the staff, aligned with the notes. The score includes a final double bar line.

The musical score for 'The Rose Tree' is presented in two systems. The first system contains the first two lines of music, and the second system contains the next two lines. The music is written for a single melodic line on a treble clef staff with a key signature of one sharp (F#). The tempo is marked 'Allegretto' and the time signature is 3/4. The melody is characterized by a mix of eighth and sixteenth notes, often beamed together. The lyrics are written below the staff, aligned with the notes. The first line of music corresponds to the first line of lyrics, and the second line of music corresponds to the second line of lyrics. The score ends with a double bar line and repeat dots.